

Title: TDP43ME CUTTER

Purpose: To provide instructions on the TDP43ME cutter

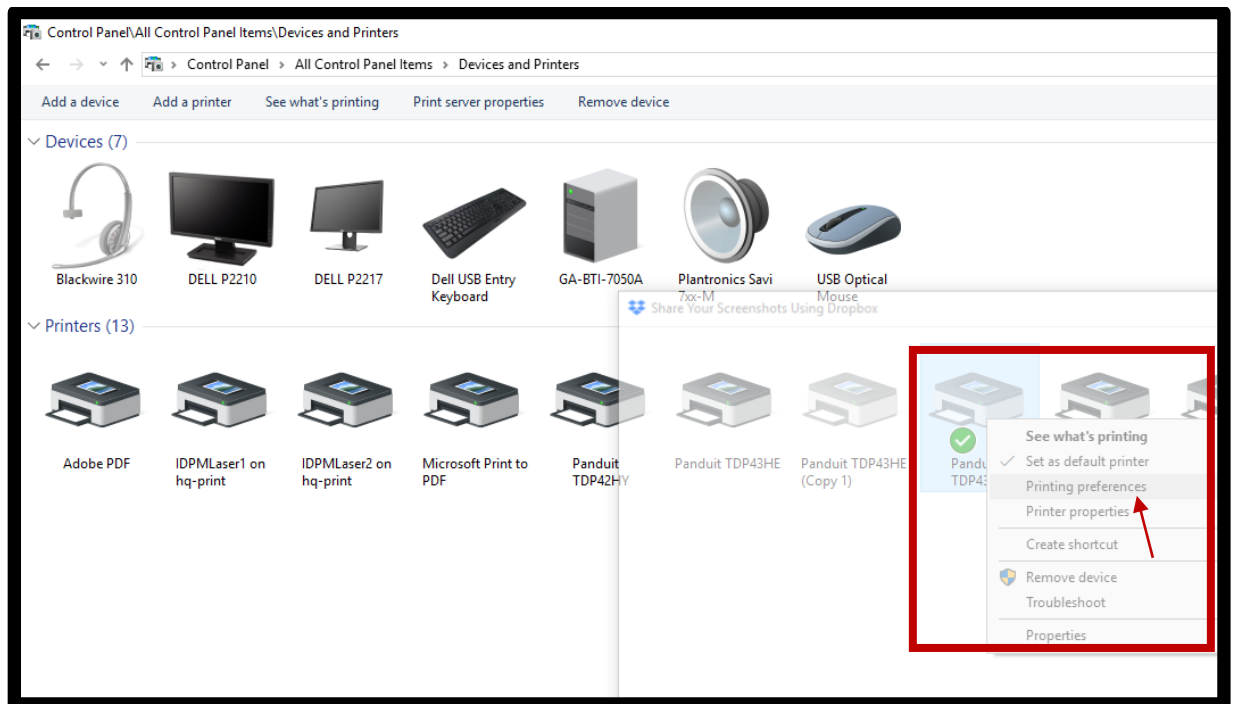
Audience: This document is intended for the Panduit Tech support team and users of the TDP43ME cutter

Procedure:

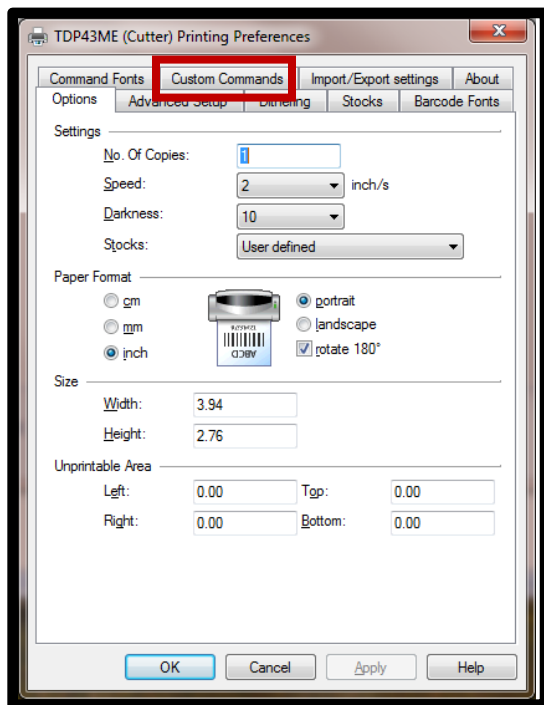
1. When installing the TDP43ME cutter, please note that customers **must have version 4.6.63 or higher** of the TDP43ME driver installed on their computer as well.
2. The number of cuts that a TDP43ME cutter is designed to make during its life is either:
 - a. 100,000 cuts for adhesive backed continuous tape
 - b. 400,000 cuts for paper backed only label stock (whichever occurs first)

INSTALLING THE TDP43ME CUTTER (TURN PRINTER OFF FIRST)

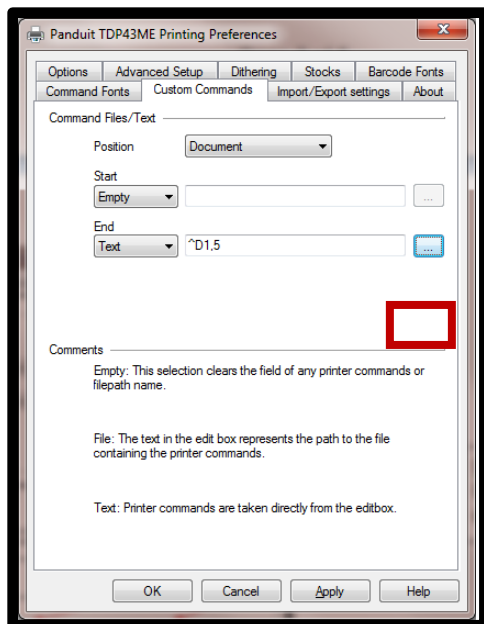
1. Open control panel
 - a. Click on PRINTERS and FAXES (Windows 7).(for Windows 10 – Devices and Printers).
 - b. Right click on the printer driver with the cutter attached.
2. Select PRINTING PREFERENCES line.



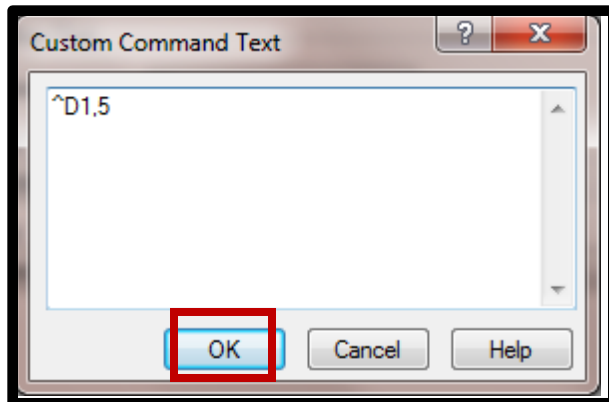
- 2 In the PRINTING PREFERENCES window, click on the CUSTOM COMMANDS tab.



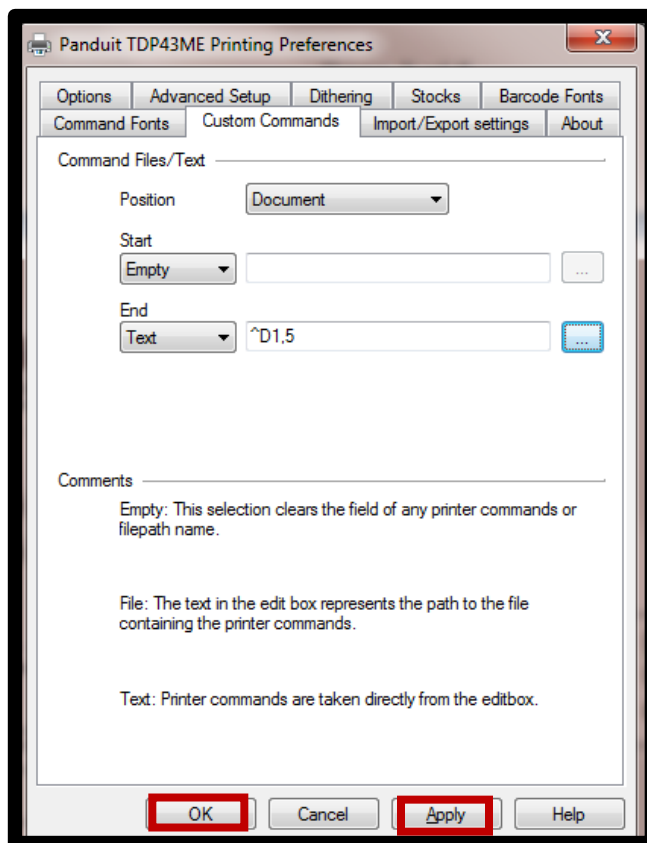
- 3 In the CUSTOM COMMANDS window, click on the END using the drop down arrow, select TEXT.



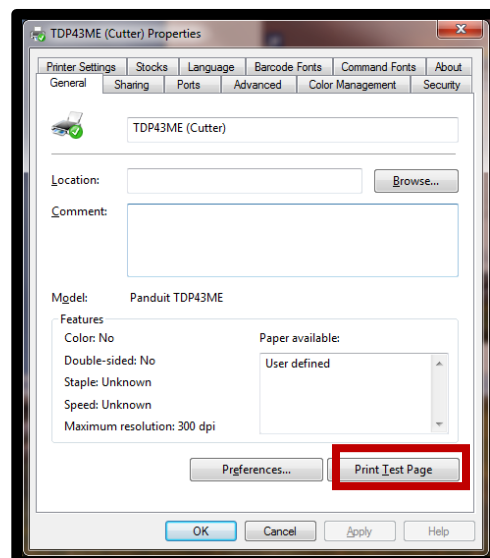
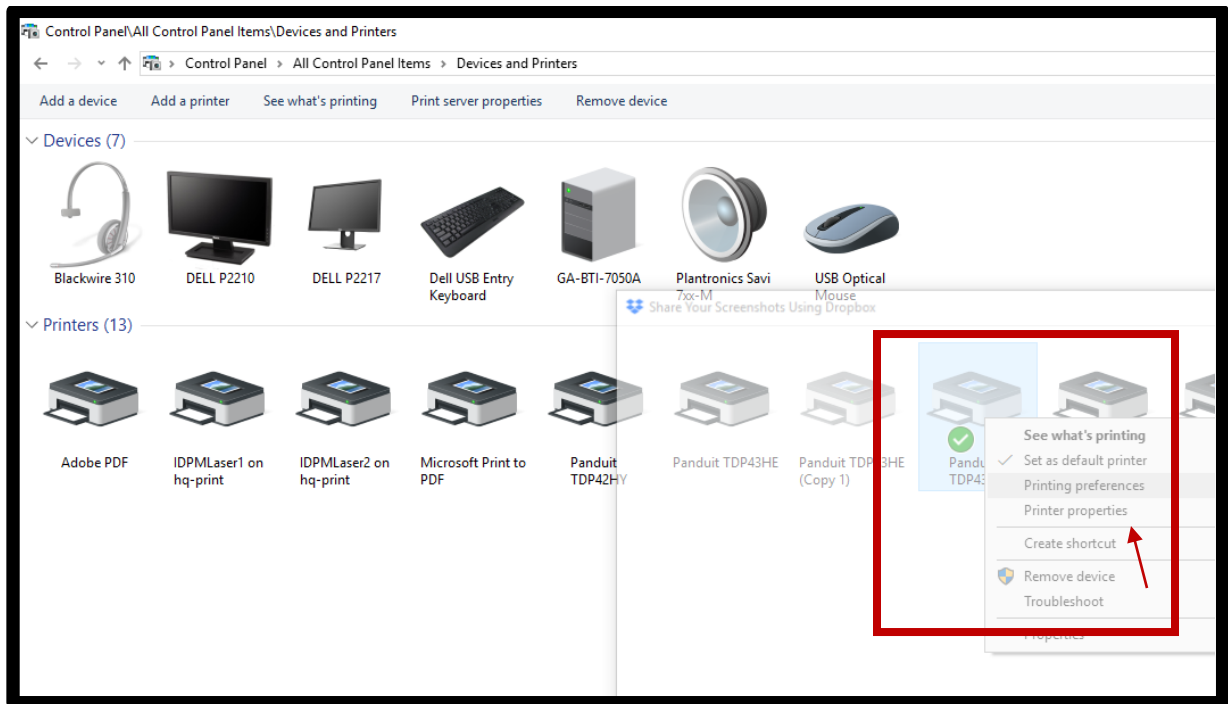
4. Click on the ellipsis (three dots) button, the following window will pop up. If there is any information in the box, that is okay. You can still click on the ellipsis.
5. In this window, type “^D1,5” followed by a *RETURN*. *Type it exactly like this command, with uppercase letters, no spaces, no quotation marks, etc. “^” is the Shift 6 button.* After the RETURN key, click OK. This action sets the printer to this setting once the next print job has been sent. Click OK. You will be returned to the Custom Commands window.



6. Click APPLY and then OK and this window will disappear.

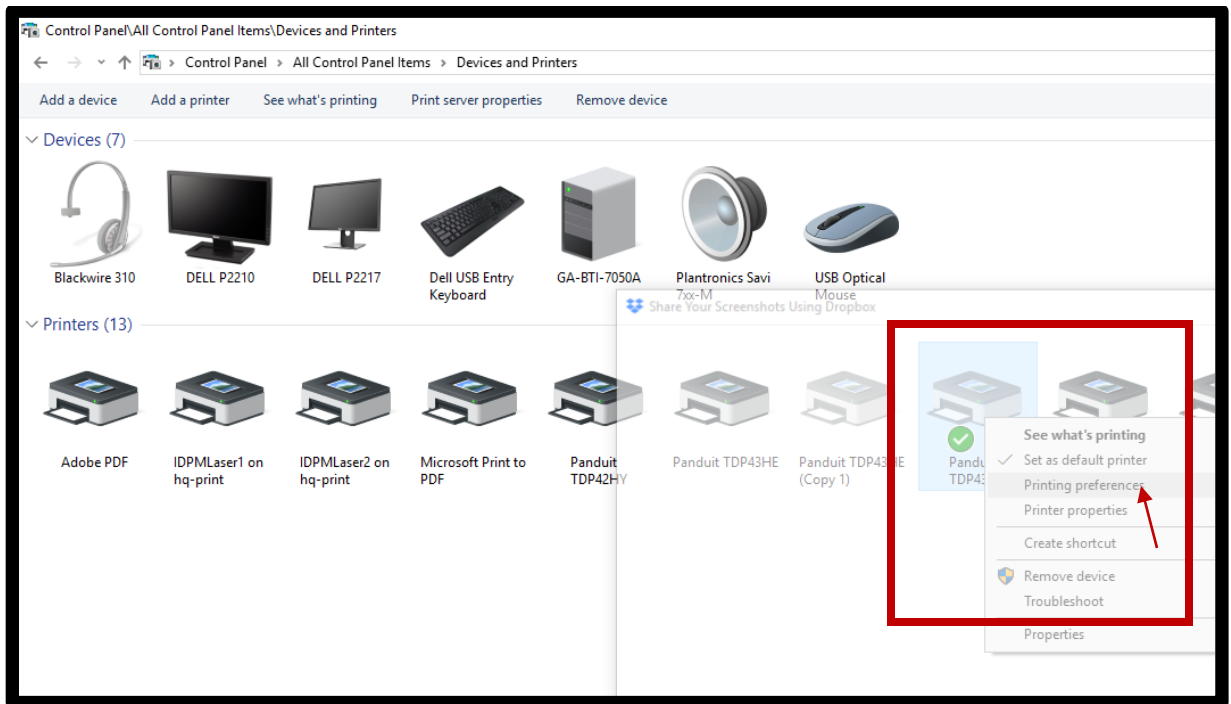


7. Turn the printer on. The printer must now print something for the Custom Command to take effect. Select the same printer and left click, only this time, select printer properties. In the PROPERTIES window, click on PRINT TEST PAGE. The printer will print the test page. If the printer flashes a RED light and/or sounds two Beep-Beep sounds, this is OK. Simply turn the printer OFF, and then back ON. The error will clear itself. The printer is now ready to cut. The label software must now be changed to add this feature.

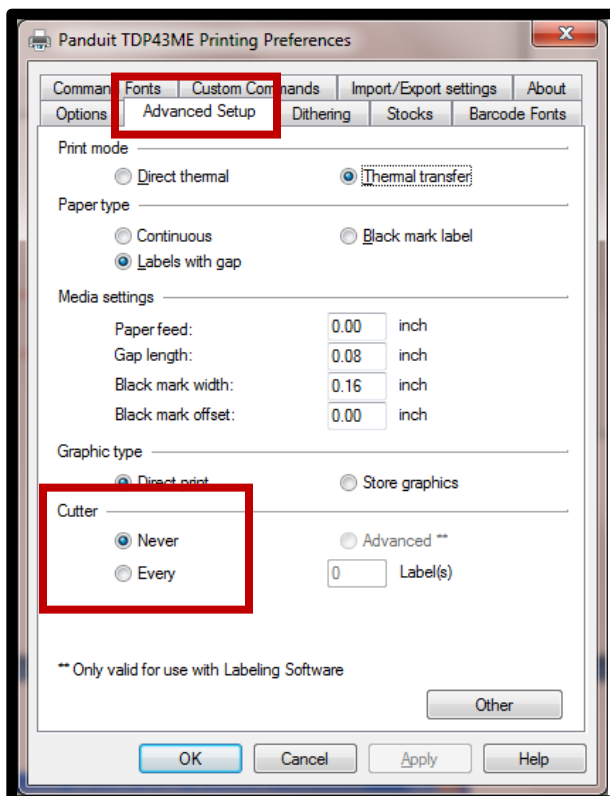


2. Setting the cutter for Easy Mark or Easy Mark Plus ON Windows 7 & Windows 10
NOTE: The distance between cuts should not be less than the depth of the cutter (1"). If this distance is less than 1", the cut labels will not be ejected from the cutter module and can jam the cutter mechanism.

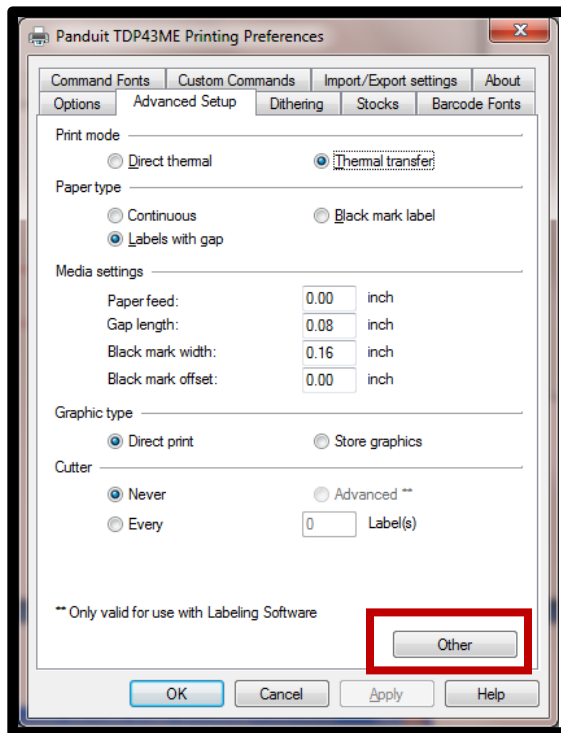
- Open Control Panel and select Devices and Printers (Windows 10) or Printer and Faxes (Windows 7). Right click on the printer with attached cutter module. Click on PRINTER PREFERENCES.



- Click on the ADVANCED SETUP tab.



5. The bottom section of the pop-up window is for Cutter settings.
 - a. The default setting is NEVER. Click next to the EVERY button.
 - b. A whole number (*no fractions*) must be entered into the box next to LABELS. This number tells the cutter to cut after X number rows of printed labels. If this number is too small, the distance between cuts (cut length) will not be long enough to eject from the cutter module. The distance between cuts is set by the number placed in the box to the right. This whole number times the height of the label must be greater than 1".
6. Click the OTHER button



- a. Enter 1.05 into the STOP POSITION box.
- b. Click Close
- c. Click APPLY. Click OK.
- d. This closes PRINTING PREFERENCES window. Close DEVICES and PRINTERS window.
- e. The cutter is ready for use.

